



# Synchronous send card ST40

---

## Specification

Version: Ver.1.1

## Statement

Dear user friend, thanks for choosing SHENZHEN SYSOLUTION TECHNOLOGY CO.,LTD referred to as Xixun Technology) as your LED advertising equipment control system. The main purpose of this document is to help you quickly understand and use the product. We strive to be precise and reliable when writing the document, and the content may be modified or changed at any time without notice.

## Copyright

The copyright of this document belongs to Xixun Technology. Without the written permission of our company, no unit or individual may copy or extract the content of this article in any form.

## Trademark



is a registered trademark of Xixun Technology.

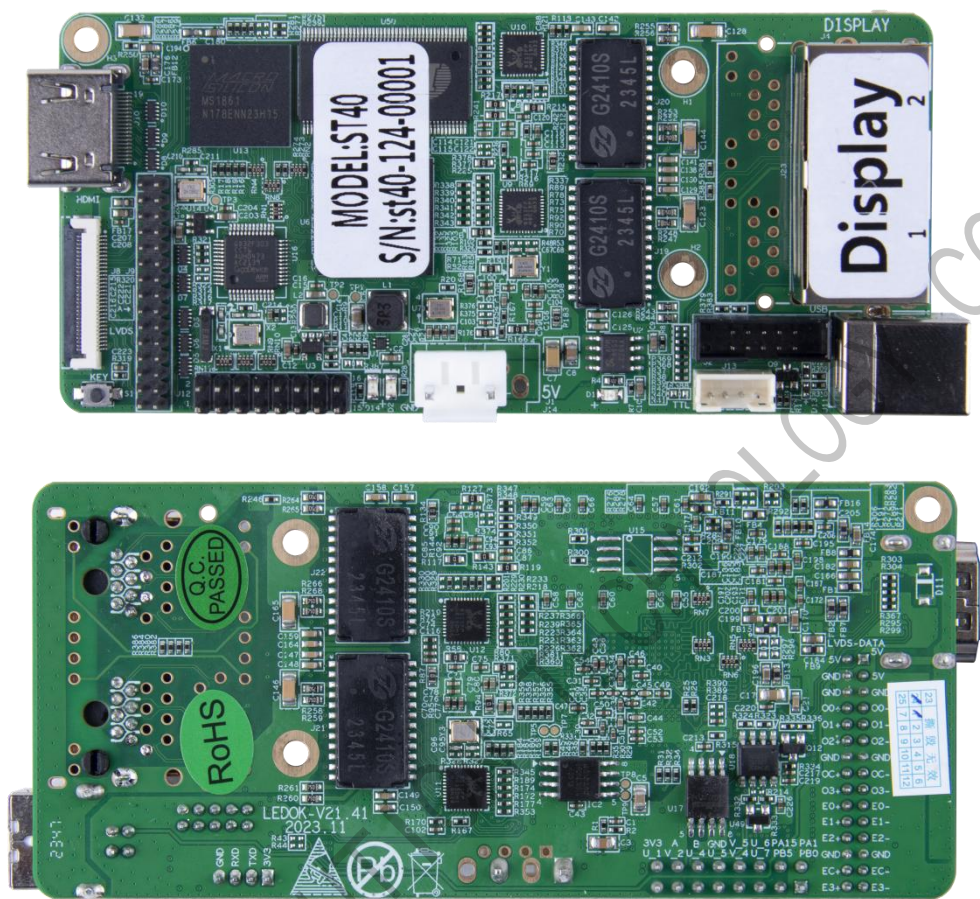
# Update Record

No.	Version	Updates	Revision Date
1	Ver.1.0	Initial Release	2024.01.01
2	Ver.1.1	Update Content	2024.07.17

The document is subject to change without prior notice.

SHENZHEN SYSOLUTION TECHNOLOGY CO., LTD

# Product Image



# Functions&Features

---

Sysolution ST40 is a compact HDMI/LVDS input synchronous sending card, suitable for small full color screen docking with set-top boxes or third-party playback boxes, easy to install.

1. HDMI input port, can be directly inserted into HDMI outputs such as graphics cards/video processors/set-top boxes/players, can use DVI-HDMI adapter extension cable.
2. LVDS input port, can be directly inserted into the LVDS output port of L20/L30 board, and can be connected to the LVDS output port of FPC flexible ribbon cable. With this input port, ST40 must supply 5V power.
3. Supports multiple standard input resolutions and custom resolutions, with widest 3840 pixels and highest 1080 pixels.
4. Support Gigabit 2 Ethernet ports output.
5. The maximum number of loaded display screen points is 1.3 million, with LED display screens of any width and height.
6. Conventional display screens do not require complex settings, and can complete parameters and arrange display screens with just one click.
7. Connect the computer with a Micro USB serial cable, compatible with Jucheng screen control, and complete all complex setting functions.
8. Can be used to test display screens on construction sites without computer operation. Can be used for simple aging testing display screen modules on production lines.
9. All operations are completed with one click, Chinese screen printing, simple and easy to use.

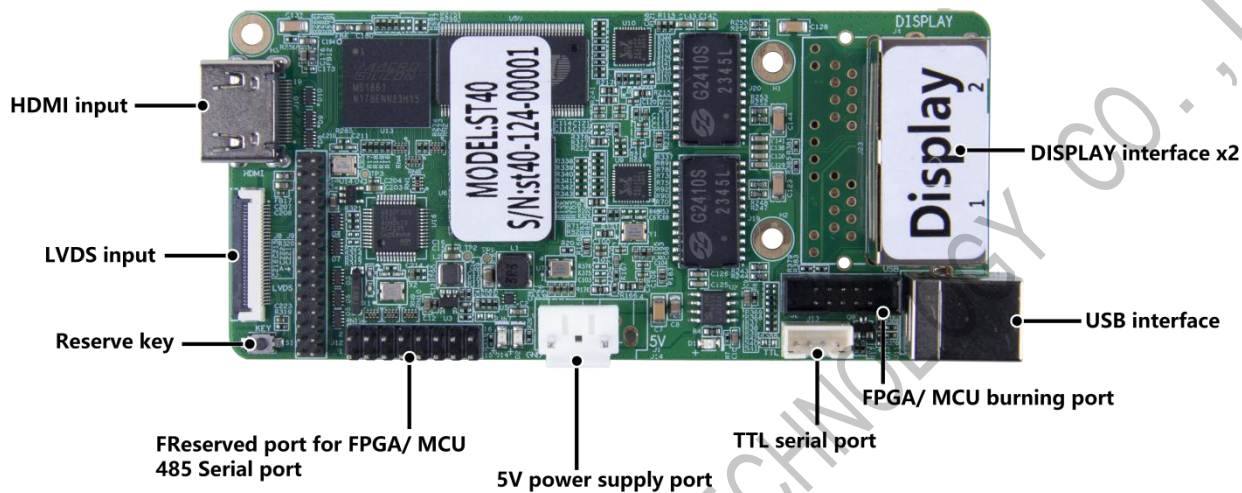
10. Can be used for PWM ICs such as ICN2053, ICN2153, ICN2163, MBI5153, MBI5252, MBI5359, SUM2131, SM16259, and other PWM IC algorithms that must be synchronously driven at 60Hz, with no faults or tears in the image.

SHENZHEN SYSOLUTION TECHNOLOGY CO., LTD.

# Hardware Parameters



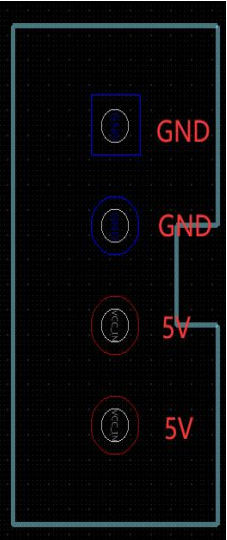
Type	Parameters
Resolution	1080P@50/59.95/60, 1080P@23.98/24/29.97/30Hz, 1080i@50/59.94/60/Hz, 720P@23.98/24/29.97/30Hz, 720P@50/59.94/60Hz,4K/30Hz
System clock	120MHZ
Flash	256KB
SRAM	48KB
Power	<ol style="list-style-type: none"> <li>1. Use LVDS interface : 5.0V (maximum voltage does not exceed 5.5V) 2A DC power input, onboard anti-reverse connection circuit</li> <li>2. LVDS interface is not used: 5V-12V</li> </ol>
Power current	Routine use current 0.3A - 0.6A, 25°C
Power supply type	VH3.96 seat (XH2.54-4P seat)

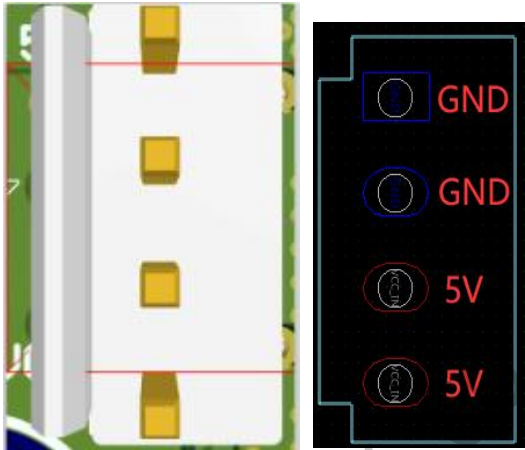

# Interface Definition



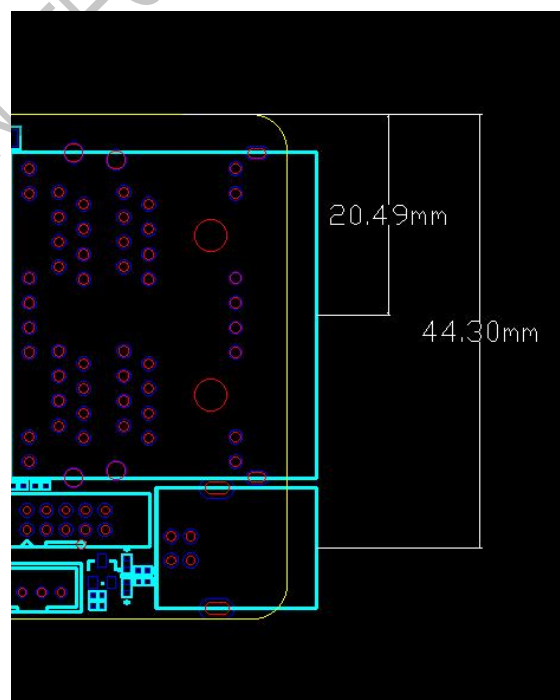
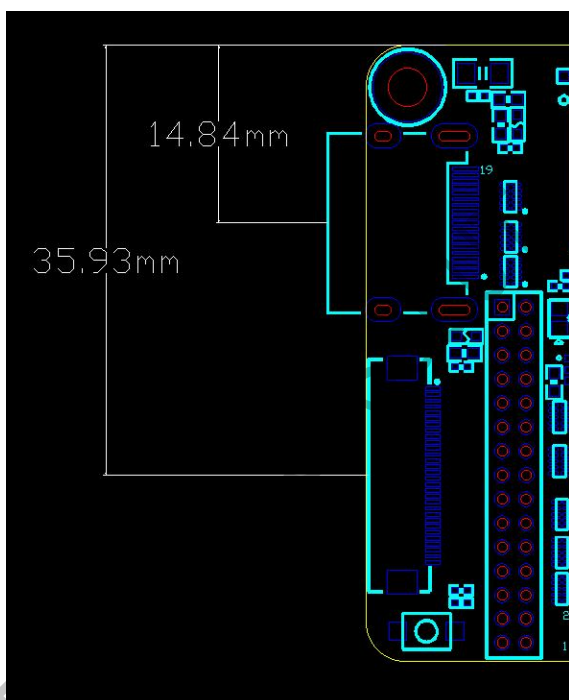
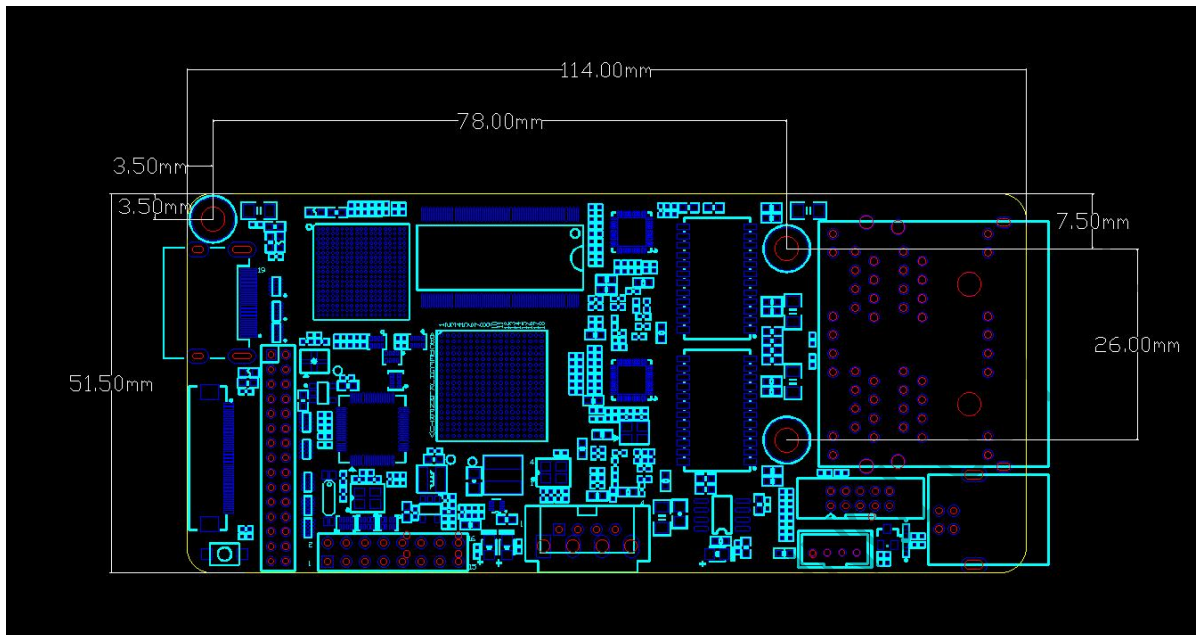
Description	Image
HDMI input	
HDMI input	
LVDS Interface	



FPC seat LVDS interface input	
15X2MM double row pin LVDS interface input	
<b>Power supply interface (choose one of XH2.54-4P socket and VH3.96 power socket for welding)</b>	
VH3.96 power socket Pin spacing: 3.96mm Pin definition: 1-GND 2-GND 3-5V 5V	 

<p>VH3.96 power socket</p> <p>Pin spacing: 3.96mm</p> <p>Pin definition:</p> <p>5-GND</p> <p>6-GND</p> <p>7-5V</p> <p>8-5V</p>	
<p><b>DISPLAY Interface</b></p>	
<p>Gigabit network port four outputs (The regular style has only two network outlets)</p>	

# Dimensional Drawing



Unit: mm

# Notes

---

1. The USB interface cannot power the card or to other devices.
2. If LVDS input interface is used, 5V must be used. If this interface is not used, 5-12V can be used.
3. Do not use improper voltage power supply.
4. Please use the equipment in a dry and clean environment.
5. It is strictly prohibited to disassemble and disassemble the product by yourself.